

# Practicile Științei Deschise în domeniul biotehnologiei (exemplu din Norvegia)

Al 2-lea Eveniment Național de Diseminare  
NI4OS-Europe în Moldova  
5 mai 2022, online

Dr. Janna Cropotova  
Universitatea Norvegiană de Știință și Tehnologie





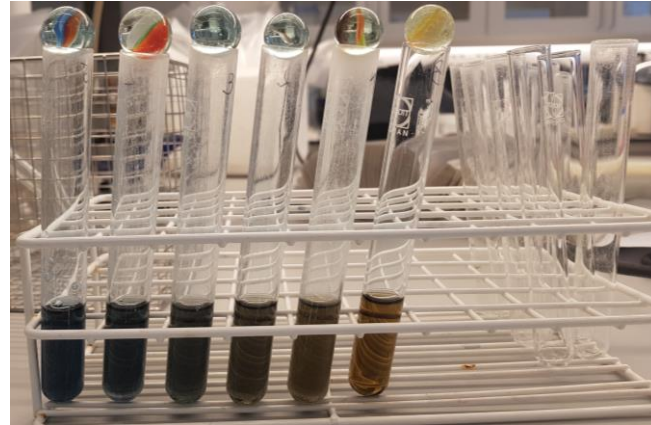
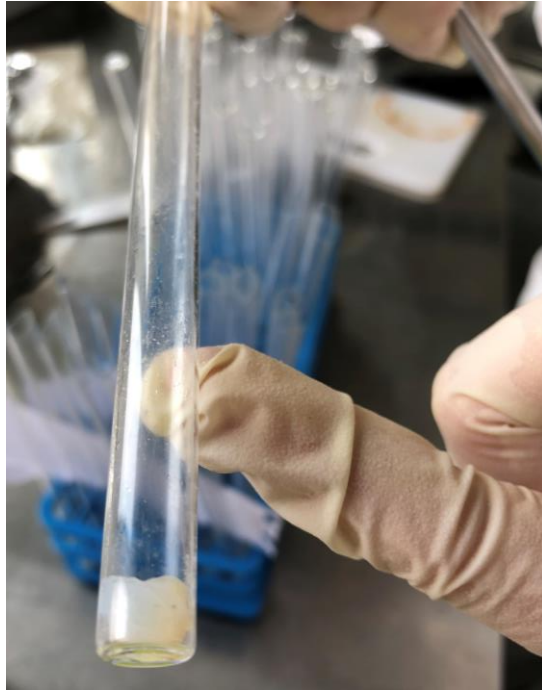
Universitatea Norvegiană de Știință și Tehnologie (NTNU) este cea mai mare universitate publică în Norvegia cu campusul principal în Trondheim și campusuri mai mici în Gjøvik și Ålesund. NTNU are peste 8.000 de angajați și peste 40.000 de studenți.

NTNU are principala responsabilitate națională pentru educație și cercetare în *Inginerie și Tehnologie*.



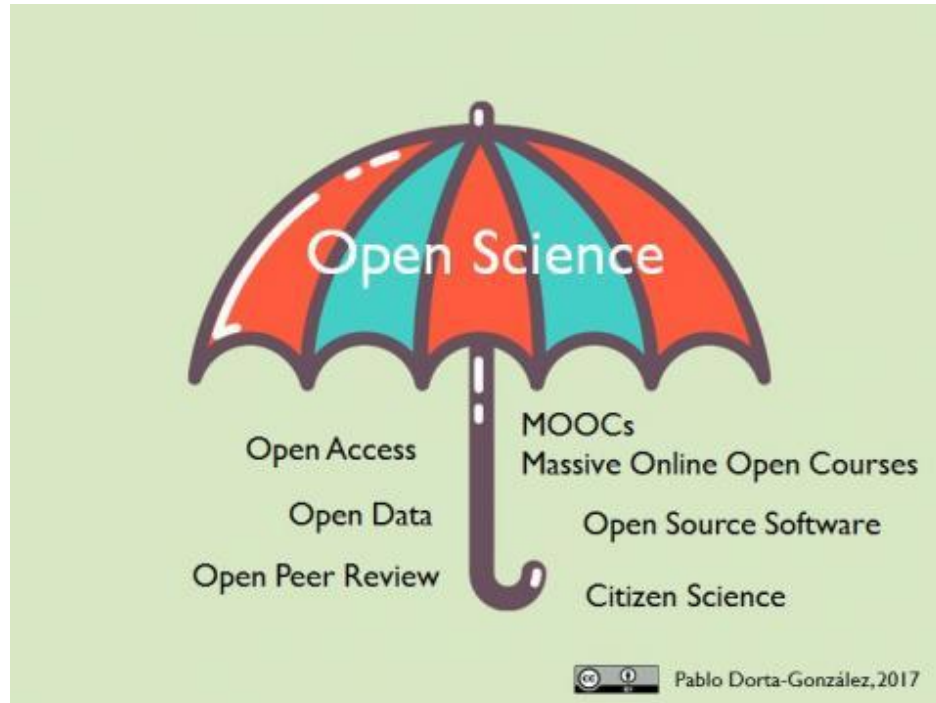


# Departamentul de Științe Biologice Ålesund



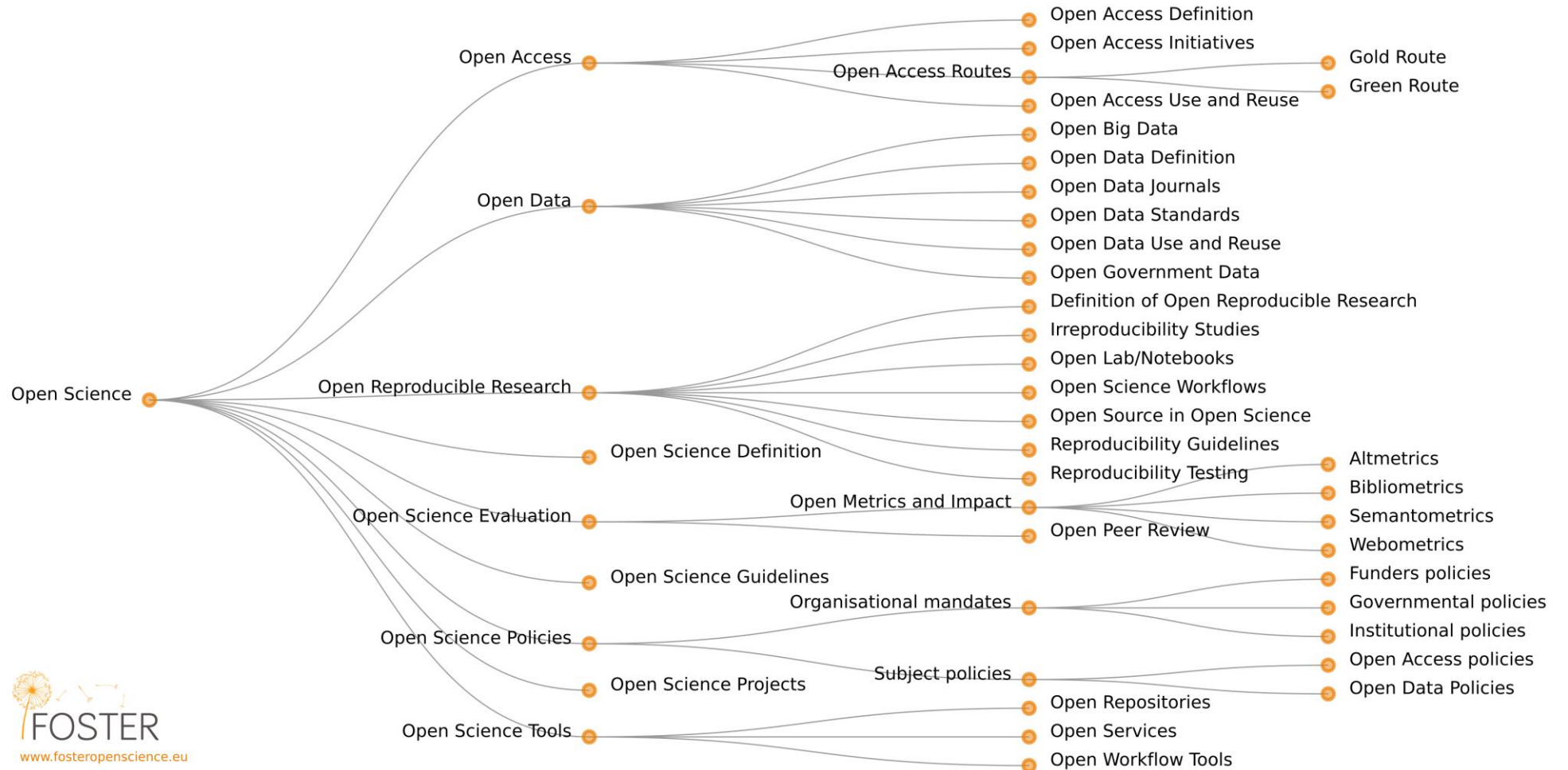
# Open Science (OS)

OS include numeroase aspecte și etape ale proceselor de cercetare, permițând astfel reproducerea completă și reutilizarea rezultatelor științifice, prin intermediul a noi tehnologii și instrumente de colaborare (EC, 2016)



# Elemente principale în Open Science (OS)

## Open Science Taxonomy





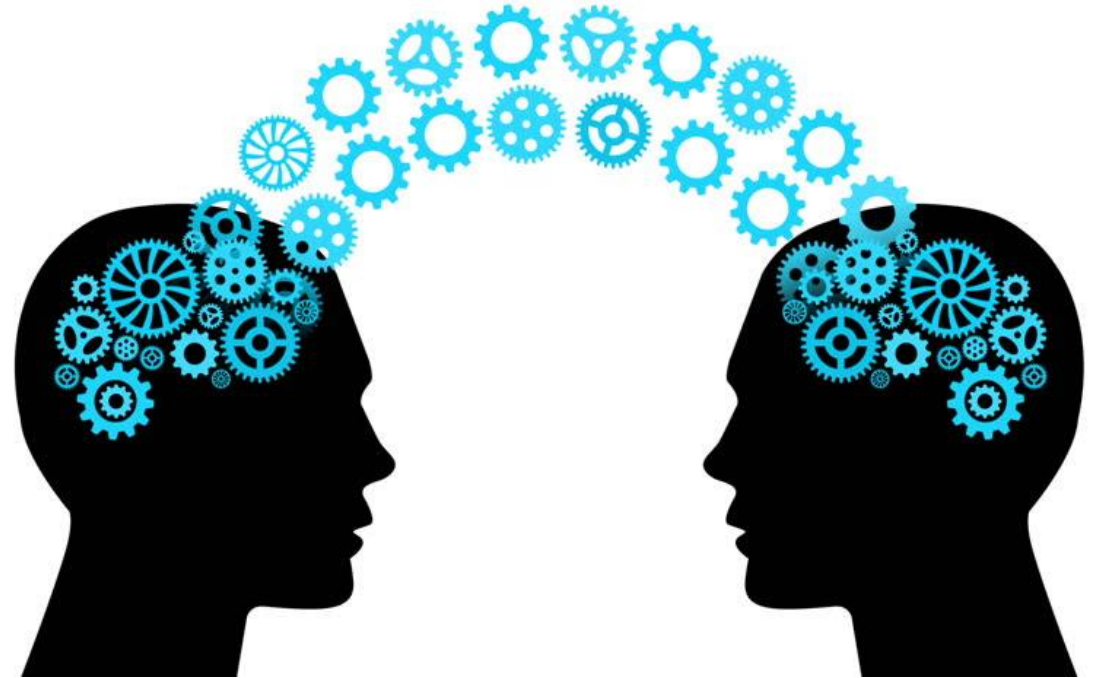
# Ce include Open Science?

- Accesul deschis (open access) la rezultatele de cercetare finantare din fonduri publice (publicatii si date),
- Reutilizarea optima a datelor de cercetare și open data prin adoptarea principiilor FAIR (findable, accessible, interoperable, re-usable),
- Deschiderea, intensificarea si internationalizarea colaborarii in stiinta (open collaboration),
- Adoptarea, dezvoltarea de tehnologii care sprijina stiinta deschisa (open source, e-infrastructuri, science 2.0),
- Deschiderea catre societate - stiinta cu cetatenii (citizen science).



# Actorii încandrați direct în OS

- Cercetători
- Agenții finanțatoare
- Universități și institute de cercetare
- Biblioteci
- Centre de date
- Edituri
- Mediul de afaceri
- Cetățeni
- Organizații inter-guvernamentale
- Etc.



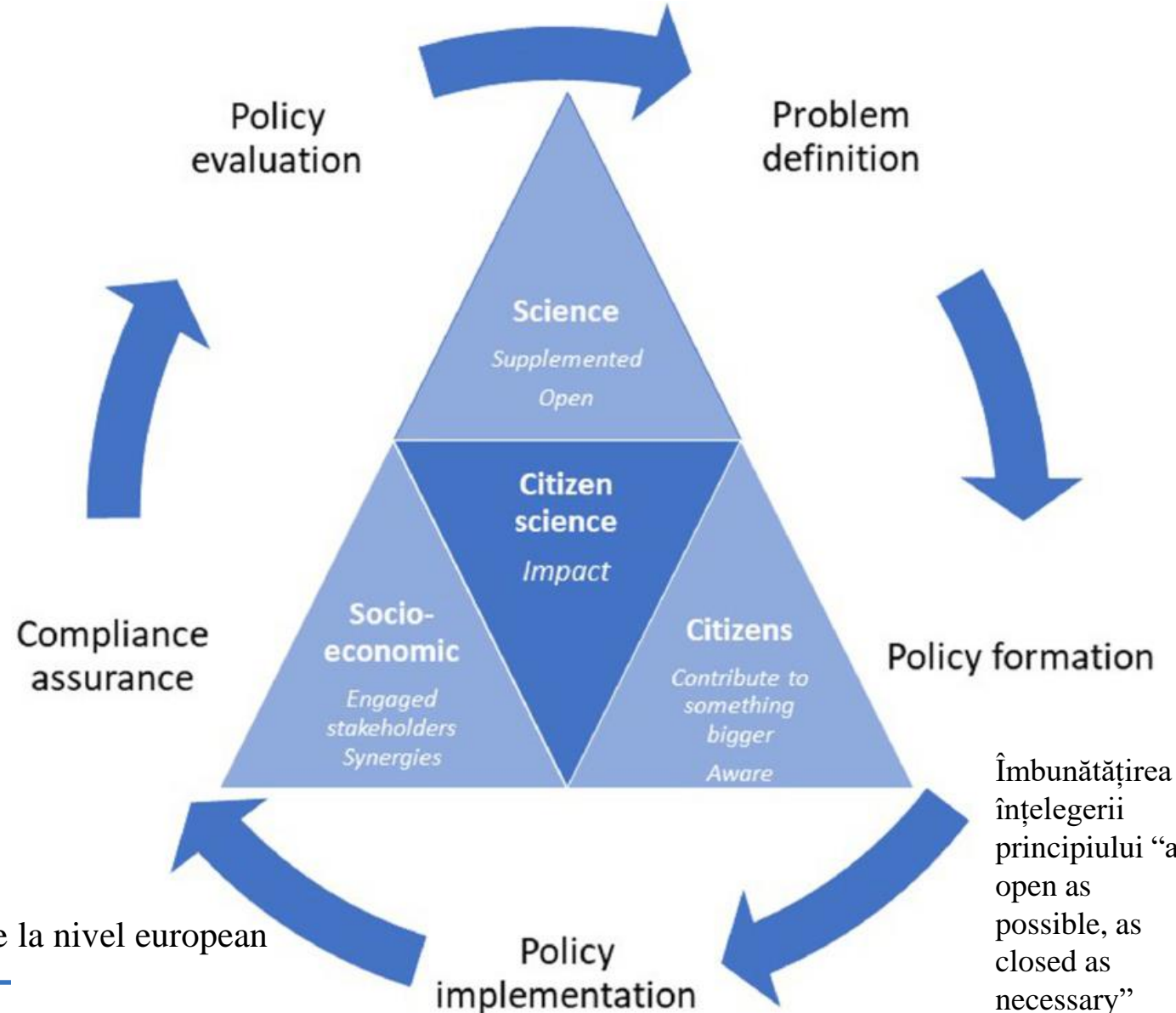
Adaptarea comportamentală la nivel individual și instituțional  
(suport prin politici adecvate)

Provocarea “big data” - depozite de date digitale, resurse  
informaționale uriașe ridică provocări noi legate de  
gestionarea acestora (acces, reutilizare și scopul folosirii lor)

**Dezvoltarea de politici instituționale  
adaptate OS și programe de formare  
(open science literacy)**

Costurile schimbării

Politici coerente și corelate la nivel european





# Research data at NTNU

As open as possible, as closed as necessary

Data should be:

NTNU guarantees: access to infrastructure and support services



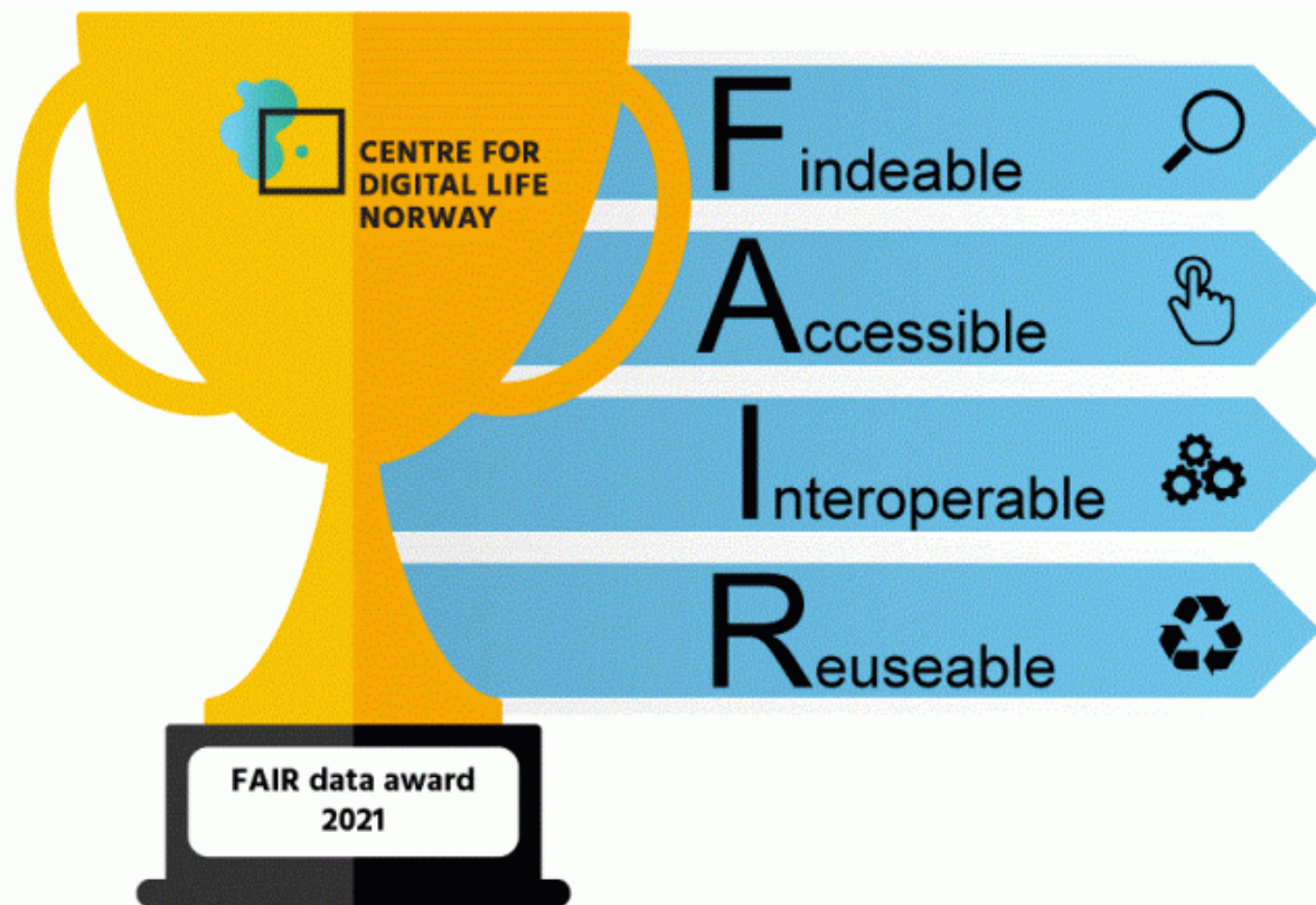
FAIR reprezintă un set de principii directoare pentru a face ca datele să fie:

- **Detectabile** (Findable)
- **Accesibile** (Accessible)
- **Interoperabile** (Interoperable)
- **Reutilizabile** (Reusable)

FAIR = schimbarea modului în care știința se face prin intermediul instrumentelor digitale; utilizatori umani + computere; accesibile în condiții bine definite (licente).

Toate datele ar trebui să fie FAIR, nu toate datele datele pot/ trebuie să fie deschise.

Date deschise (open data) ≠ “not free”



Original illustration: Colourbox.com / RWGusev, FAIR logo derived from [CODATA](#) under [CC-BY](#)

# Actori interesați în principiile FAIR

În ecosistemul eScience, provocarea de a facilita utilizarea optimă a datelor și a metodelor de cercetare este una complexă, existând mai multe părți interesate:

- cercetătorii care doresc să partajeze datele și interpretările lor;
- editori de date profesioniști care oferă servicii;
- creatorii de software și instrumente care oferă servicii de analiză și prelucrare a datelor;
- agențiile finanțatoare care se ocupă tot mai mult de gestionarea corectă a datelor (Data Stewardship);
- comunitatea (pentru) date științifice





# Plan S

Making full & immediate  
Open Access a reality

International initiative to  
ensure Open Access

# Coaliția S

## cOAlition S funders





## What is Plan S

[Norsk versjon: Hva betyr Plan S?](#)

The Research Council, together with the EU Commission, the European Research Council ERC and research financiers throughout Europe, demand that all articles from the research they finance should be published with open access from 2020.

### Principles

- Authors retain the copyright of their publication without limitation. All publications must be published with an open license, such as CC BY license or equivalent.
- The financiers will help to design robust requirements for quality assurance.
- The financiers will help establish open publishing channels if high quality channels do not exist, and provide open access infrastructure if needed.
- Publishing costs are covered by the financiers or institutions, not by individual researchers.
- Publishing fees are standardized and have limits.
- The financiers want coordination between the research institutions, especially to ensure transparency.
- The requirements initially apply to journal articles, but will include books in the long term.
- Open archives remain important for long-term archive function and the possibility of further development.
- Hybrid publishing is not accepted.
- The financiers will introduce sanctions if the requirements are not met.

### Information and useful links

Science Europe writes about cOAlition S: [What is coalition S?](#)



# Principiile FAIR

Forțează revistele spre a schimba accesul pe bază de abonament cu accesul liber (OA). Cum? Prin următoarele:

- **publicarea OA în reviste hibride nu mai este eligibilă:** finanțatorii din coaliția S nu mai decontează APCs pentru publicarea hibridă OA;
- **soluția adoptată de membrii coaliției S – negocieri transformative** (transformative agreements) cu revistele – termenul de limită nou pentru NTNU este anul 2025;
- **negocieri de 3 tipuri:**
  - *conversia costurilor pt. abonamente în costuri pentru publicare OA;*
  - *continuarea plății abonamentelor dar publicarea gratuită în OA;*
  - *tranziția revistei către revistă de tip O.*



# Acorduri de publicare



News My profile For employees For students



Intranettet / Knowledge base / Agreements for Publishing Open Access

## Agreements for Publishing Open Access

NTNU has made agreements with publishers for publishing Open Access. To have an Article Processing Charge (APC) covered for publications outside our agreements, please contact the library.

If you do not know what publisher/agreement the journal belongs to, please check the [Norwegian register for Scientific Journals, Series and Publishers](#)

Norsk versjon: [Avtaler for publisering med åpen tilgang](#)

[Topic page about Publishing](#) | [Publish with Open Access](#)

### This apply to all agreements:

- Normally the person sending the article to the publisher are defined as the Corresponding Author. If you are the only author, you will automatically be defined as Corresponding Author. The Corresponding Author must be affiliated with NTNU. In many agreements authors from St. Olav hospital - Trondheim University Hospital are also included.
- State/choose NTNU as your institution if you sign a publishing agreement. These agreements may be referred to as 'License Agreement', 'publishing contract'. To avoid doubt about your affiliation, please give and use your ntnu.no email in your correspondence with the publisher. If asked, choose Open Access.
- Make sure you do not sign an author agreement where you renounce the rights to the article.
- If you have a choice of licence NTNU is recommending the [Creative Commons CC BY](#). This gives the best possibility for the article's future sharing, outreach and reuse. You will retain copyright. [Read more about the licences that are accepted by the Research Council of Norway](#).

### Innholdsfortegnelse [-]

1. [American Chemical Society \(ACS\)](#)
2. [Association for Computing Machinery \(ACM\)](#)
3. [Cambridge University Press \(CUP\)](#)
4. [Elsevier](#)
5. [Frontiers](#)
6. [IEEE](#)
7. [MDPI](#)
8. [Microbiology Society](#)
9. [Open Library of Humanities \(OLH\)](#)
10. [Oxford University Press \(OUP\)](#)
11. [Public Library of Science \(PLOS\)](#)
12. [Sage](#)
13. [SciPost](#)



# Research data @ NTNU

## Research Data

For employees

### What is Research Data @NTNU?

- a central support service for research data
- a service for researchers and students at NTNU
- a contact point for faculties and institutes at NTNU
- a collaboration between the University Library and NTNU IT

RESEARCH  
DATA  
@NTNU

### NTNU requires good research data management

Research data at NTNU should be managed according to best practice and be as open as possible and as closed as necessary. Data containing personal information must be processed according to [GDPR and NTNU guidelines](#).

### Data Management Plan (DMP)

All research projects at NTNU should develop a [Data Management Plan](#) describing how the research data will be managed.

### NTNU Open Research Data

Research data at NTNU can be published and shared openly in our repository for research data, [NTNU Open Data](#).

### Data Management

Search for data	▼
Data Management Plan (DMP) and planning	▼
Storage and active management of research data	▼
Archiving and publishing of research data and code	▼
Training, guidance and support	▼

### Useful resources

- [ELIXIR Norway - support and tools for life science research](#)
- [Course in data management on FOSTER e-learning platform \(EU project\)](#)
- [MOOC on Open Science from TUDelft](#)
- [PhD on Track](#)
- [Mantra Research Data Management Training](#)
- [MOOC on Research Data Management and Sharing from Coursera](#)
- [Cessda Data Management Expert Guide](#)



# Open data

## NTNU Open Data



On this page you can find information about how you can archive your data set in the institutional repository NTNU Open Research Data.

[Topic page about research data](#) | [Pages labeled with Open Data](#)

[Norsk versjon - NTNU Open Data](#)

### About NTNU Open Research Data

NTNU Open Research Data is an institutional repository for open data from all fields and disciplines. The archive is part of [DataverseNO](#), which is operated by UiT The Arctic University. NTNU Open Research Data adheres to the guidelines and policy of DataverseNO, and all data sets will be curated before publication. DataverseNO is a Core Trust Certified repository and assigns DOIs (Digital Object Identifiers) to data sets. The standard license is [CC0 \(Creative Commons Zero\)](#), but other open licenses can be considered if needed.

### How to archive in NTNU Open Research Data

You can log in to [NTNU Open Research Data with FEIDE](#) (your NTNU user). We recommend that you read the [DataverseNO deposit guidelines](#) before uploading your data. As the guidelines are quite comprehensive, we have listed some important aspects which are often overlooked. Having a look at some of the already published data sets in DataverseNO is also useful in order to get an overview of how to describe your data according to DataverseNO's guidelines.

Note that there are limited options for changing file structure and data once the dataset is uploaded. You should therefore finalize your dataset according to the guidelines before uploading.

#### Innholdsfortegnelse [-]

- [1. About NTNU Open Research Data](#)
- [2. How to archive in NTNU Open Research Data](#)
- [3. See also](#)
- [4. Contact](#)

### ^ What is DataverseNO?

[DataverseNO \(https://dataverse.no/\)](#) is a **national, generic repository for open research data**, owned and operated by UiT The Arctic University of Norway. DataverseNO is aligned with the [FAIR Guiding Principles for scientific data management and stewardship](#). The technical infrastructure of the repository is based on the open source application [Dataverse](#), which is developed by an international developer and user community led by Harvard University. DataverseNO is [CoreTrustSeal certified](#).

## info: DataverseNO



## About DataverseNO

On this page we have gathered information about DataverseNO.

- ▼ **What is DataverseNO?**
- ▼ **For institutions**
- ▼ **For individual researchers**
- ▼ **Data curation and preservation**
- ▼ **Metadata harvesting**
- ▼ **Organization of DataverseNO**
- ▼ **Further reading**

Contact us at [researchdata@hjelp.uit.no](mailto:researchdata@hjelp.uit.no) for more information about DataverseNO.

**New user?** See the section [Create a user account here](#).



Metrics 176,465 Downloads

Contact Share

<

**Western Norway University of Applied Sciences**  
 HVL Open Research Data

**INN**  
 Inland Norway University of Applied Sciences  
 INN Open Research Data

**NORWEGIAN SCHOOL OF THEOLOGY, RELIGION AND SOCIETY**  
 MF Norwegian School of Theology, Religion and Society

**NMBU**  
 Norwegian University of Life Sciences  
 NMBU Open Research Data

>

Search this dataverse...

[Advanced Search](#)

- Dataverses (21)**
  - Datasets (1,217)**
  - Files (90,871)**
- Dataverse Category**
- Organization or Institution (11)
  - Research Project (4)
  - Research Group (3)
  - Department (1)
  - Researcher (1)
- 
- Publication Year**
- 2022 (69)
  - 2021 (298)
  - 2020 (185)
  - 2019 (375)
  - 2018 (205)
- [More...](#)
- 
- Distributor Name**
- UiT Open Research Data (735)
  - NORD Open Research Data (136)
  - UiB Open Research Data (105)
  - NTNU Open Research Data (68)

1 to 10 of 1,238 Results

Sort ▾

**Replication Data for: Resemblance reporting on children; sisters are more proactive than brothers**

May 3, 2022 - UiT Open Research Data

Folstad, Ivar, 2022, "Replication Data for: Resemblance reporting on children; sisters are more proactive than brothers", <https://doi.org/10.18710/CV1NQB>, DataverseNO, V1, UNF:6:pgoX7BJTIs+7hFn5IehLhg== [fileUNF]

These data relates to the article "Resemblance Reporting on Children: Sisters Are More Proactive than Brothers"

**The proteome and secretome of rat liver sinusoidal endothelial cells in early primary culture, and effects of dexamethasone**

Apr 29, 2022 - UiT Open Research Data

Bhandari, Sabin, 2021, "The proteome and secretome of rat liver sinusoidal endothelial cells in early primary culture, and effects of dexamethasone", <https://doi.org/10.18710/AAJYOW>, DataverseNO, V3

LSECs from male Sprague Dawley rats were cultured on collagen type-I in 5% oxygen atmosphere in DMEM with serum-free supplements for 2-24h. Quantitative proteomics using a tandem mass tag (TMT)6-plex strategy on Q-Exactive mass spectrometer. The worksheet contains the normalized...

**Replication Data for: A Computational Protocol for VCD spectra of Cyclic Peptides**

Apr 29, 2022 - UiT Open Research Data

Eikás, Karolina Di Remigio; Ruud, Kenneth; Beerepoot, Maarten T. P., 2022, "Replication Data for: A Computational Protocol for VCD spectra of Cyclic Peptides", <https://doi.org/10.18710/VITGV3>, DataverseNO, V1

This dataset contains output files for a conformational search (CREST 2.8), optimized geometries, frequencies and Vibrational Circular Dichroism (VCD) properties (Gaussian 16 Rev. B.01) for the seven molecules cyclo(Ala-bAla-Ala-bAla), Cyclo(Ala-bAla-Pro-bAla), Cyclo(Pro-bAla-Pro...

# Open data

## Deposit Guidelines

On this page, we describe how research data must be **prepared** before they can be published in DataverseNO, how the **deposit process** works, and how you can **refer** to your own or others' data.

- [Prepare your data for depositing](#)
- [Deposit your data](#)
  - [DataverseNO Deposit Agreement](#)
- [Refer to your data](#)



To the extent possible under law, [DataverseNO](#) has waived all copyright and related or neighboring rights to this info site. However, good scientific practices expect that proper credit is given via citation to <https://info.dataverse.no>. This work is published from: Norway.

# Open data

# What is Open Access?

Peer-reviewed, academic publications are made freely available

## Principiile și avantajele:

- **Acces universal deschis**
- **Licențierea deschisă**

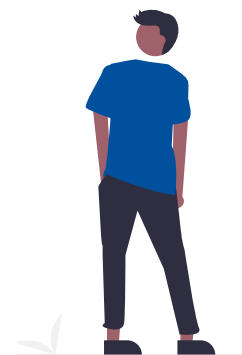
Licențele deschise contribuie la promovarea responsabilității și trasabilității, permit autorilor să continue să obțină beneficii din munca lor și să maximizeze măsura în care lucrarea poate fi construită de alții.

- **Evaluare riguroasă și continuă de către colegi**
- **Sprijinirea metadatelor**

Datele și observațiile susținute de metadata trebuie să fie disponibile pentru examinare atunci când este publicat un concept pentru care furnizează dovezi.

- **Accesul generațiilor viitoare**
- **Valorificarea oportunităților**

Revoluția digitală a creat noi oportunități pentru a spori descoperirea și diseminarea de noi cunoștințe în moduri mai eficiente și mai eficiente

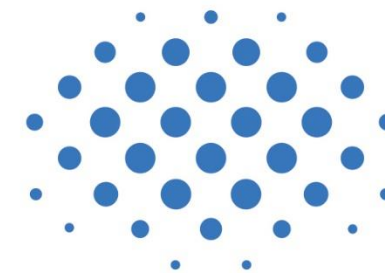
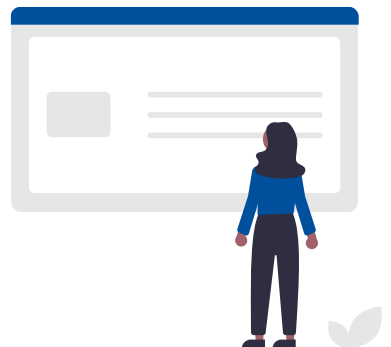






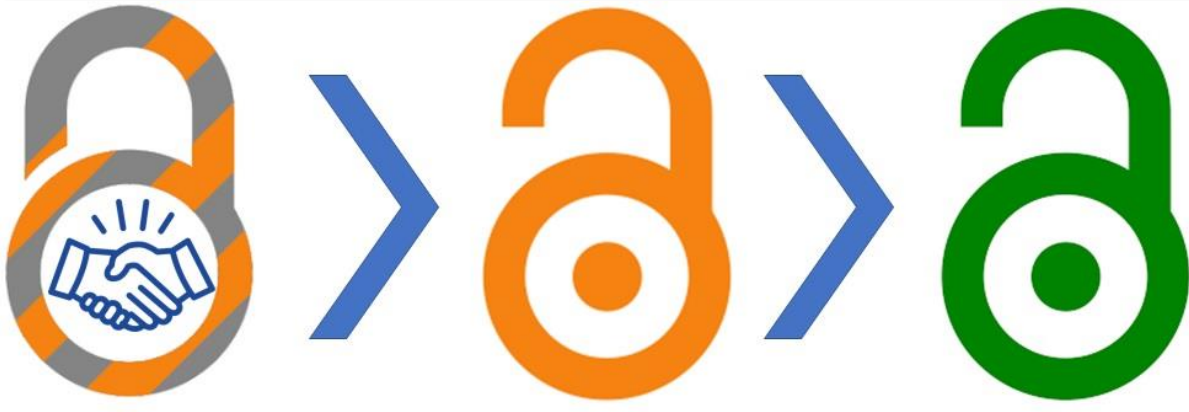
## Why publish Open Access?

În contextul dezvoltării rapide a societății, s-a intensificat schimbul deschis de date (open data sharing) la nivel european și global, și o mișcare importantă ce sprijină acest schimb este deschiderea rapidă a accesului la resurse și rezultate de cercetare: mai multe grupuri au deschis accesul la articole și date științifice.



**NI4OS**  
Europe

# Paths to open access

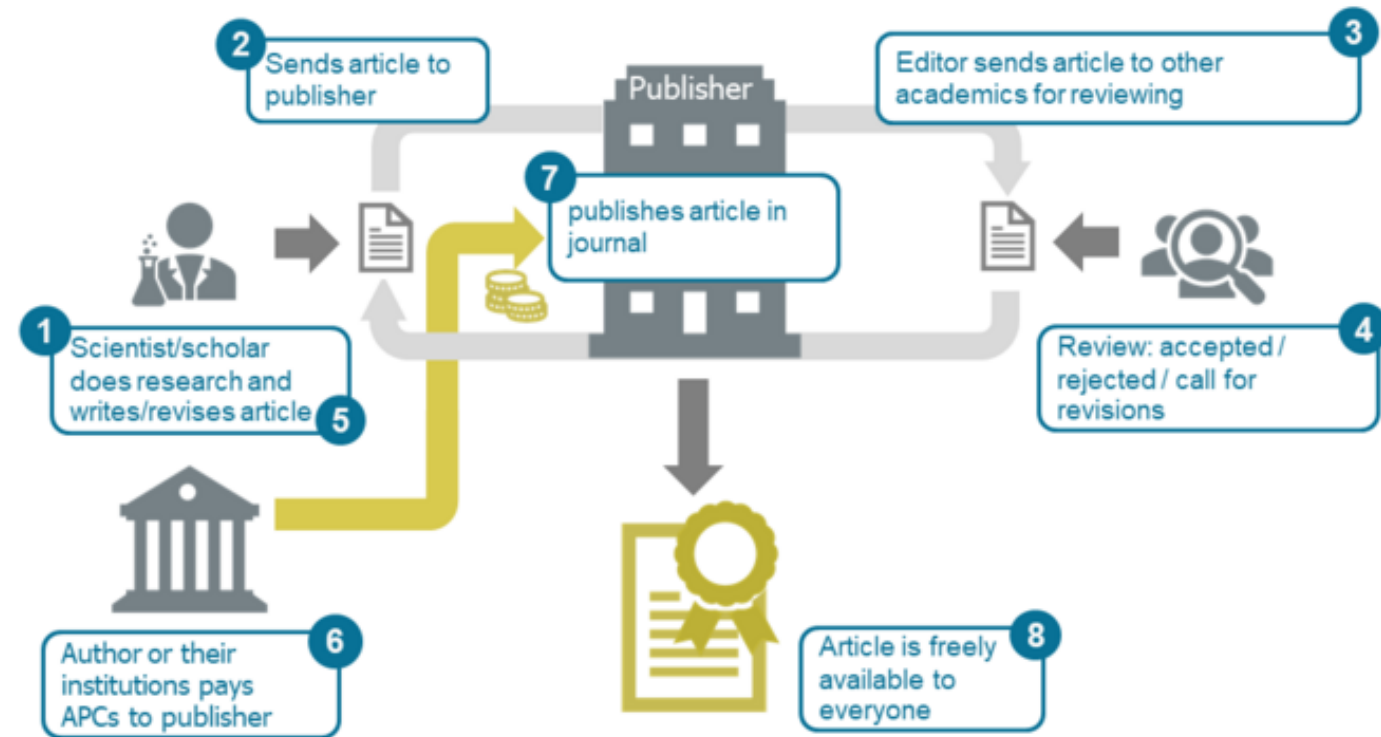


Picture: Sindre Andre Pedersen, [CC-BY 4.0](https://creativecommons.org/licenses/by/4.0/)



# Gold open access

## Academic Publishing: Gold Open Access

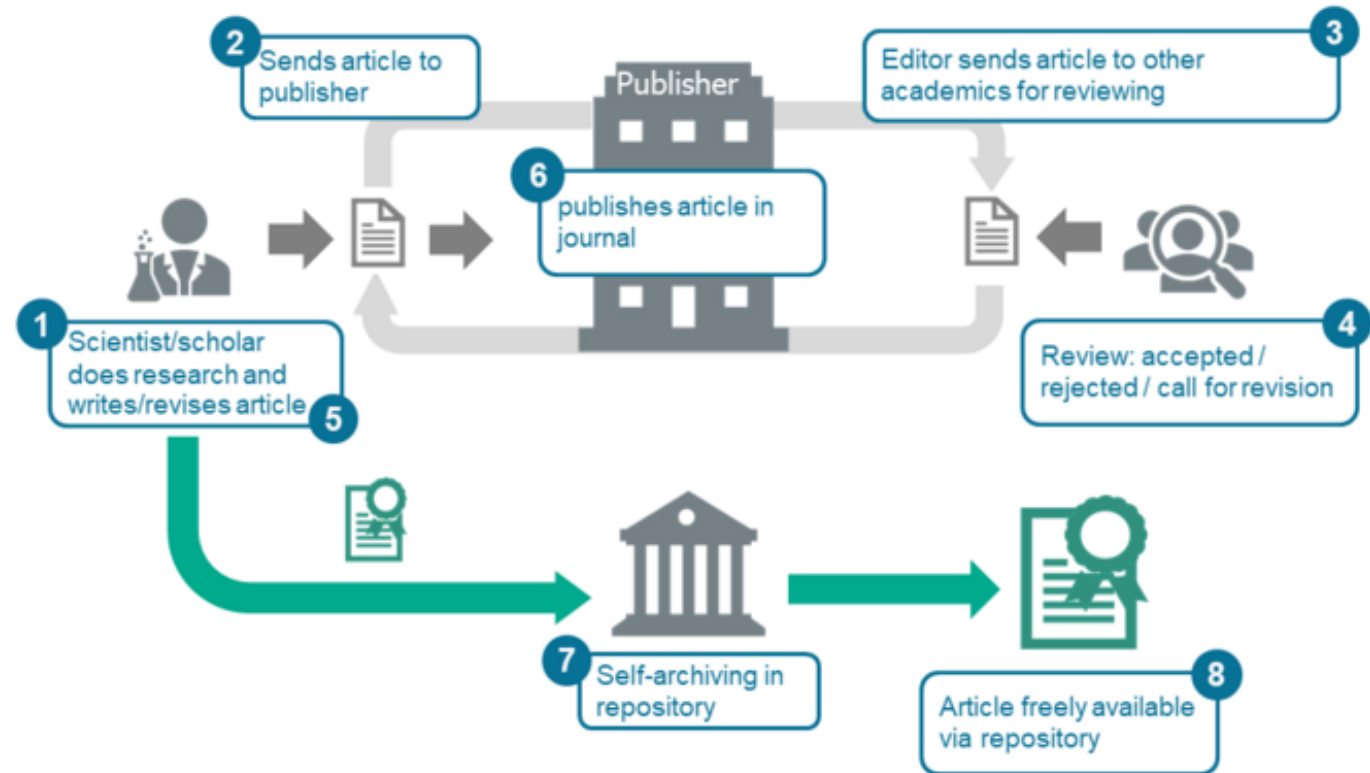


Source: Based on Oberländer, Anja (2020). Open Access – Es ist nicht alles Gold, was glänzt. In: Open Science. Von Daten zu Publikationen. Zenodo. <http://doi.org/10.5281/zenodo.4018594>

Source: based on Oberländer, A. (2020). Open Access – Es ist nicht alles Gold, was glänzt. In: Open Science. Von Daten zu Publikationen. Zenodo. <http://doi.org/10.5281/zenodo.4018594> (CC BY 4.0 International)

# Green open access


## Academic Publishing: Green Open Access (Post-Prints)



Source: Based on Oberländer, Anja (2020). Open Access – Es ist nicht alles Gold, was glänzt. In: Open Science. Von Daten zu Publikationen. Zenodo. <http://doi.org/10.5281/zenodo.4018594>



# Green open access – NTNU

 Submitting publications to an institutional repository is a two-step process:

- 1: The author uploads the document in Cristin


It is recommended that a post print version (final draft after peer review) of the scientific article is uploaded, since this is what most publishers permit. If the publisher allows archiving of the publisher's final pdf, this version is preferred.

- 2: The repository ensures publisher compliance

The institutional repository is responsible for ensuring compliance with copyright and licenses, and will make sure that publications are not made publicly available in violation of publisher requirements or embargo periods.

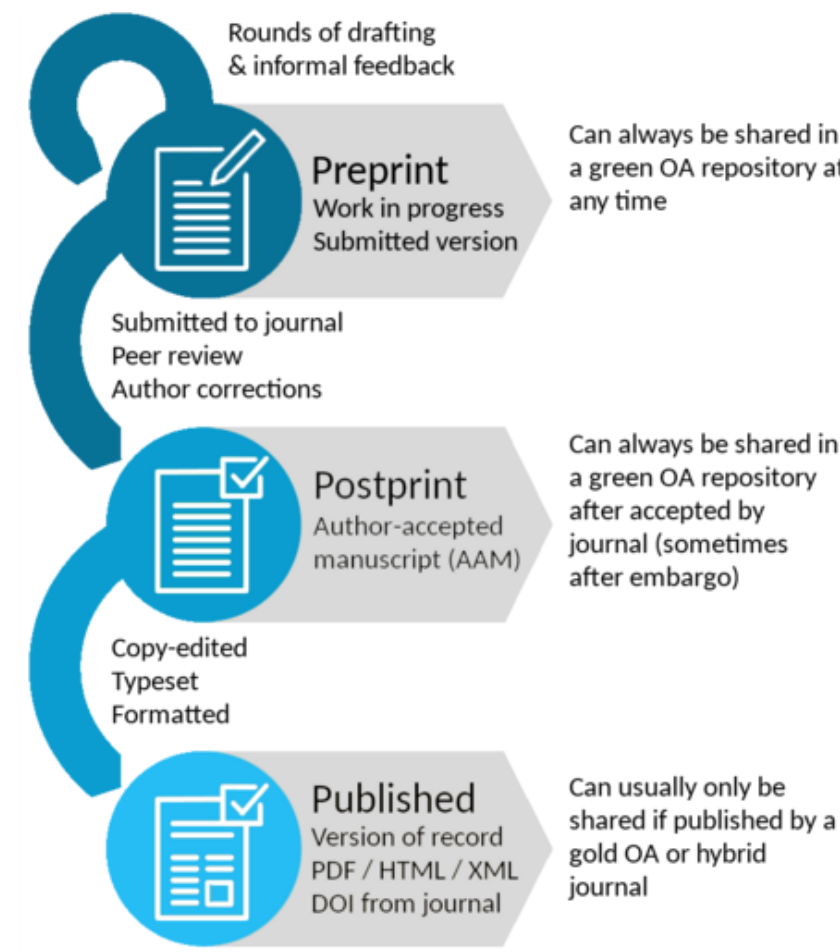
Please contact a Cristin superuser or repository administrator at your institution if you have any questions regarding this process.

---

 Choose document type  ▼

Choose file:

No file chosen



Source: Based on: Shafee, Thomas (2020). Typical publishing workflow for an academic journal article (preprint, postprint, and published) with open access sharing rights per SHERPA/JoMEO. Own work; adapted from diagram by Ginny Barbour [Wikimedia Commons \(CC BY 4.0 International\)](#)

# Green open access - CRISTIN

Where you register your scientific publications

The screenshot shows the CRISTIN registration interface. At the top left is the CRISTIN logo and the text "CRISTIN Current Research Information System In Norway". At the top right is a search bar with a magnifying glass icon and the text "Search for projects, results and persons". Below the header is a white box with the text: "The most frequently used categories of results can now be registered here. If you need to register a result into a category not available here, you can do so in the [old version of Cristin](#)." The form consists of several sections, each with an icon and a title: 1. "Digital Object Identifier (DOI)" with a pencil icon and a text input field containing "https://doi.org/". 2. "Description" with a book icon, a "Language" dropdown menu (selected "Select original language"), and a "Title" text input field with a character count "(0/500)". 3. "Where is the result published?" with a book icon, a note "The book must be registered before adding a book chapter.", and a dropdown menu with options "ALL RELEVANT", "JOURNAL", "BOOK", "PUBLISHER", and "PRESENTATION". Below this is a search input field "Search for title, ISSN, ISBN or publisher". 4. "Category" with a list icon, a dropdown menu with options "RELEVANT", "ALL", and "ACADEMIC (NVI)", and a "Select category" text input field. 5. "Year" with a calendar icon and a text input field.



**CRISTIN**  
Current Research Information System In Norway

Søk etter prosjekter, resultater og personer



#### PROSJEKTER

Inkludert godkjente helseprosjekter fra REK

LOGG INN



#### RESULTATER

Publikasjoner, formidling, samt kunstfaglig utviklingsarbeid

LOGG INN



#### PERSONPROFIL

Kontaktinformasjon og forskningsaktivitet

GÅ TIL INNLOGGING



#### FORSKNINGSGRUPPER

Beskrivelse, deltakere og forskningsaktivitet

GÅ TIL INNLOGGING

Per i dag består Cristin av to systemer, ett nytt og ett gammelt. Begge system deler database og inneholder samme informasjon. Du kan gjøre det meste i det nye systemet, men endring av egen profil og superbrukers administrative oppgaver må gjøres i det gamle. Brukernavn og passord er det samme i begge systemer. [Videre utvikling av Cristin skal gjøres i sammenheng med utvikling av Nasjonalt Vitenarkiv \(NVA\).](#)

[Nyttig informasjon og veiledninger finner du på cristin.no](#)

Janna Crobotova



1 - 10 av 36 | Neste | Siste »



#### EFSA Scientific Opinion on superchilling technique for the transport of fresh fishery products.

Crobotova, Janna. 2021, Interdisciplinary Education and Research Platform in Cold-Chain of Fish: From Norway to Japan - IntER-Cold. NTNU

Faglig foredrag



#### Janna Crobotova

FØRSTEAMANUENSIS

ved Institutt for biologiske fag Ålesund ved Norges teknisk-naturvitenskapelige universitet



#### Potential of fluorescence microscopy technique to assess lipid peroxidation status in sous-vide cooked Atlantic mackerel during chilled storage.

Crobotova, Janna; Rustad, Turid. 2017, The 8th International Symposium on Recent Advances in Food Analysis. NTNU

Vitenskapelig foredrag



#### An integrated approach to assess textural changes of sous-vide cooked mackerel in relation to breakdown of its connective tissue.

Crobotova, Janna; Rustad, Turid. 2017, 47th West European Fish Technologists Association Conference. NTNU

Vitenskapelig foredrag

https://wo.cristin.no/as/WebObjects/cristin.woa/wa/default?la=en&inst=185

Cristin

Norsk versjon

In order to register data in Cristin, you must be an academic or administrative employee.

- Mainpage
- Research results/NVI
- Researchers
- Projects
- Research units
- Log in
- About Cristin

Cristin (Current Research Information System in Norway) is a common system for registering and reporting of research activities and results. It is used by member institutions in the research institute sector, the higher education sector and health trusts.

For å søke etter informasjon i CRISTIN-systemet, velg kategori i venstremenyen. Du søker etter resultater/publikasjoner under «Forskningsresultater/NVI». Har du problemer med å få logget på, se vår [FAQ](#) eller ta kontakt med [din lokale superbruker](#).

To search for information in the CRISTIN-system, choose a category in the menu on the left. You search for results/publications under "Research results/NVI". If you have problems signing in contact [your local super user](#).



**CRISTIN**

Current Research Information System In Norway



Search for projects, results and persons

Cristin result ID: 1807758

Last modified: February 16, 2021, 6:51 PM

Year of NVI-reporting: 2020

RESULT



Academic article

2020

**A new fluorimetric method for simultaneous determination of lipid and protein hydroperoxides in muscle foods with the use of diphenyl-1-pyrenylphosphine (DPPP)**

Janna Crobotova and Turid Rustad

# Exemplu Gold Open Access



## JOURNAL

Lebensmittel-Wissenschaft + Technologie

ISSN 0023-6438

e-ISSN 1096-1127

NVI-level 1

[Find in the Norwegian register for publishers](#)



## ABOUT THE RESULT

Academic article

Year of publication: 2020

Published online: 2020

Printed: 2020

Volume: 128

Article number: 109467

Open Access



## LINKS

ORIGINAL ONLINE (DOI)

<https://doi.org/10.1016/j.lwt.2020.109467>

INSTITUTION ARCHIVE

[hdl.handle.net/11250/2673641](http://hdl.handle.net/11250/2673641)




## IMPORT SOURCES

Scopus ID: 2-s2.0-85083760425


# Exemplu Green Open Access

Cristin-resultat-ID: 1098646 Registrert av: [Armin Hafner, NTNU](#) Sist endret: 18. oktober 2016, 13:11 Sist endret av: [Armin Hafner, NTNU](#) NVI-rapporteringsår: 2013 NVI-BEHANDLING



**RESULTAT**



  
**Vitenskapelig artikkel**  
2013





**DGGE Identification of Microorganisms Associated With *Borrelia burgdorferi* Sensu Lato- or *Anaplasma phagocytophilum*-infected *Ixodes ricinus* Ticks from Northwest Norway**


 Ann-Kristin Tveten, Andreas Riborg og Hanne Tjelle Vadseth

---

 **TIDSSKRIFT**  
International Journal of Microbiology  
ISSN 1687-918X  
e-ISSN 1687-9198  
NVI-nivå 1  
 [Finn i kanalregisteret](#)

 **OM RESULTATET**  
Vitenskapelig artikkel  
Publisert/trykket  
Publiseringsår: 2013  
Publisert online: 2013  
Trykket: *Registrer ...*  
Volum: *Registrer ...*  
Hefte: *Registrer ...*  
Sider: *Registrer ...*  
Artikkelnummer: *Registrer ...*  
 Open Access

 **LENKER**  
ORIGINAL ONLINE (DOI)  
 <https://doi.org/10.1155/2013/805456>  
INSTITUSJONSARKIV  
 [hdl.handle.net/11250/2624742](http://hdl.handle.net/11250/2624742)  
 [Lever fulltekstdokument](#)

 **IMPORTKILDER**  
Scopus-ID: 2-s2.0-84888882700



- Logg ut
- Hovedside
- + **Forskningsresultater/NVI**
- **Forskere**
- Min forskerprofil
- Søk
- Hjelp
- **Prosjekter**
- + **Forskningsenheter**
- + **Årsrapportering**
- + **Tilgang**
- + **Rapporter**
- + **Autoritetsdata**
- **Om Cristin**

[Rediger profil](#) [Registrer forskningsresultat](#)

## Janna Crobotova

Institutt for biologiske fag Ålesund (Førsteamanuensis) - [Norges teknisk-naturvitenskapelige universitet](#)

### Vitenskapsdisipliner

### Emner

### Prosjekter

### Forskningsresultater i Cristin

[Forskningsresultater i Cristin \(34\)](#)

[Forskningsresultater i Cristin for 2022](#)

[Forskningsresultater i NVI-kategoriene for 2022](#)



### Kontaktinfo

Norges teknisk-  
naturvitenskapelige universitet

*E-post*

Annet

- [Logoff](#)
- [Main page](#)
- Research results/NVI**
  - Register result
  - Quick reference list of persons
  - Quick reference list of journals
  - My authorname
  - Search in results
  - Help with results
  - Help with quick reference list
- [+ Researchers](#)
- [+ Projects](#)
- [+ Research units](#)
- [+ Annual reporting](#)
- [+ About Cristin](#)

## Registration of research results

### Category:<sup>\*</sup>

Enter the type of work you want to register:

#### Main category

- [Journal publication](#)
- [Conference lecture and academic presentation](#)
- [Book](#)
- [Report/thesis](#)
- [Part of a book/report](#)
- [Translation](#)
- [Media contribution](#)
- [Artistic and museum-related presentation](#)
- [Artistic result](#)
- [Product](#)
- [Information material\(s\)](#)

**Cancel**

# How open?

As open as possible, as closed as necessary

## Storage services and collaboration platforms

Storage services and collaboration platforms refer to cloud services or servers at NTNU. Click on the different solutions for more information.

	Public	Internal	Confidential	Highly confidential
Personal cloud storage (dropbox, google drive ++)	OK	NO	NO	NO
<a href="#">NTNU Personal home directory («M:-drive»)</a>	OK	OK	OK	OK (1)
<a href="#">NTNU Shared directory (T:-drive, group, project, etc.)</a>	OK	OK	NO	NO
NTNU-administered Dropbox (contact Orakel)	OK	OK	NO	NO
NTNU-Box	OK	OK	NO	NO
Office 365 (SharePoint, Teams, Onedrive)	OK	OK	OK(1)	NO
<a href="#">NTNU NICE-1 - Storage solution with added security</a>	OK	OK	OK	OK (1)
<a href="#">HUNT Cloud</a>	OK	OK	OK	OK (2)
<a href="#">UiO TSD</a>	OK	OK	OK	OK
<a href="#">NIRD (tidligere Norstore, driftes av Uninett Sigma2)</a>	OK	OK	NO	NO

(1) Data must be encrypted. [Read more on how to encrypt O365 files using AIP here](#) or [how to encrypt other files with 7-Zip](#)

(2) Risk level is assessed on individual basis, see the [HUNT information page](#) for more information.

## Information security and classification

NTNU guidelines state that information must be classified in order to determine the value and identify the need for security and protection. The confidentiality classification describes what level of protection that is needed. These assessments must be made for all projects.

Public

Internal

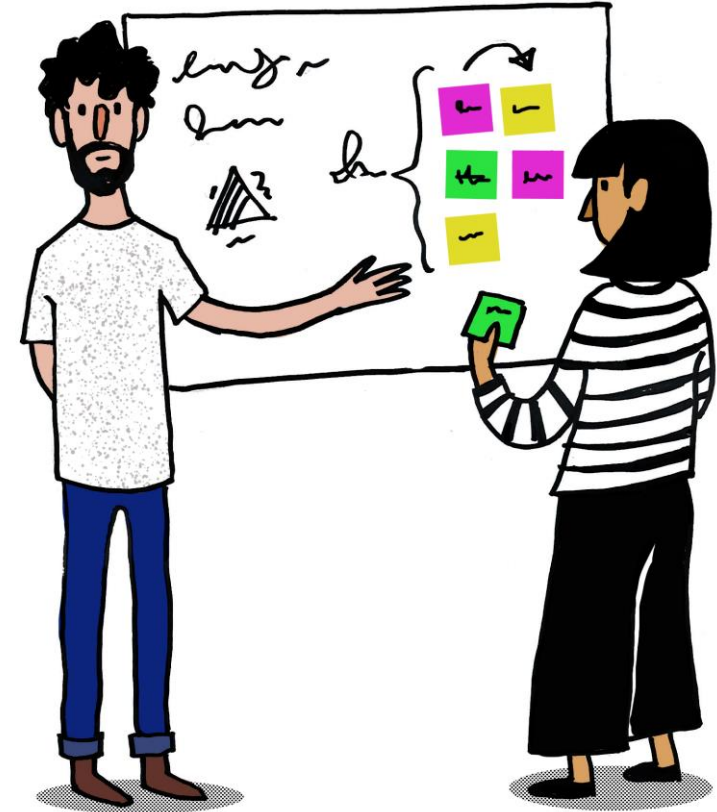
Confidential

Highly Confidential

# NTNU support



RESEARCH  
DATA  
@NTNU



# The Virtual Library



## Courses and events

### Just ask!

Every weekday: 09–15

[Start video call](#) and ask us about:

- Academic writing
- Citations
- Literature searches
- Borrow and order from the library
- And much more

Here you meet library employees who you can ask about what you need help with, either via chat or video call. Every visit in The Virtual Library is confidential.



# Courses

LaTeX course	22.04.22	09:00 - 12:00	The Virtual Library	22.04.2022, 09:00	52 av 75 ledige / vacancies	<a href="#">Les mer og meld deg på / Registration</a>
Academic skills for PhD-candidates - Sources, writing, ...	25.04.22 - 28.04.22	09:15 - 12:00	Zoom	24.04.2022, 15:00	37 av 100 ledige / vacancies	<a href="#">Les mer og meld deg på / Registration</a>
EndNote introduction (English)	26.04.22	10:15 - 12:00	The virtual library	26.04.2022, 08:00	46 av 50 ledige / vacancies	<a href="#">Les mer og meld deg på / Registration</a>
Zotero introduction course (english)	27.04.22	12:15 - 14:00	The Virtual Library	26.04.2022, 15:00	37 av 50 ledige / vacancies	<a href="#">Les mer og meld deg på / Registration</a>
Skrivepress	28.04.22	10:15 - 12:00	Det virtuelle biblioteket	27.04.2022, 15:00	100 av 100 ledige / vacancies	<a href="#">Les mer og meld deg på / Registration</a>

# Thanks!



<https://ni4os.eu/>



[https://twitter.com/NI4OS\\_eu](https://twitter.com/NI4OS_eu)



<https://www.facebook.com/NI4OS/>

Janna Cropotova <[janna.cropotova@ntnu.no](mailto:janna.cropotova@ntnu.no)>

